

*World Leader of Luxury Expeditions*

**2023**

# LUXURY ANTARCTICA EXPEDITION

Buenos Aires | Antarctica Peninsula | South Georgia | Falkland Island | South Orkneys

*Ponant Bonus*

**SAVE 5% TO 30%**

Book early to enjoy the highest Ponant Bonus level

*First Time Cruiser*

**EURO\$250**

Welcome Offer for First time Ponant Cruiser est RM1200

*Solo Traveller*

**SINGLE ROOM  
NO SUPPLEMENT  
CHARGE**

selected room category on cruise portion only

Ponant  
Antarctica Video



18D  
The Antarctic  
Odyssey  
starting from  
**RM75,600**  
(Cruise portion)

2023 : 04 Nov

## THE WORLD'S YOUNGEST EXPEDITION FLEET & POLAR EXPERT FOR 30 YEARS.

This 17days expedition is **most comprehensive** of our Antarctic cruises covers the Falkland Islands, South Georgia, the South Orkney Islands, before reaching the Holy Grail of all explorers - the shores of the White Continent.



For more information :-

contact us at +603-2142 0222(KL) +604-2288 088(PG) / whatsapp +(011-26488220) or email to [contact@seduniatravel.com](mailto:contact@seduniatravel.com)



**SEDUNIA**  
travel

Sedunia Travel Services Sdn. Bhd. (30240-V) (KKKP No.0019)

KL (HQ) : Level 12, 13 & 15.2 Menara Genesis, 33 Jalan Sultan Ismail, 50250 Kuala Lumpur

PENANG (Branch) : Unit 1-3, 1st Floor, Menara Penang Garden, 42A Jalan Sultan Ahmad Shah, 10050, Penang





PONANT, A World Leader of Luxury Expeditions



Exclusive Partnership with Smithsonian journeys On specific programs



Over 30 years experience in Polar Expeditions



World's youngest and modern Expedition Ship with latest marine technology & stabilizer system to handle rough sea.



Maximized time spend ashore on each landing. Zodiac landing and outings



Inclusive Intra-flight (Chartered flight)



FREE Water Resistant Parka & FREE WIFI



Air taxes and port charges (included)



French-designed interiors & ambiance. Luxury amenities, superior comfort & personalised service



95% cabin are suites with private balcony



Smaller crowd, more privacy with average 200 guests on board



Inspired, refined and varied cuisine, prepared by talented French chefs

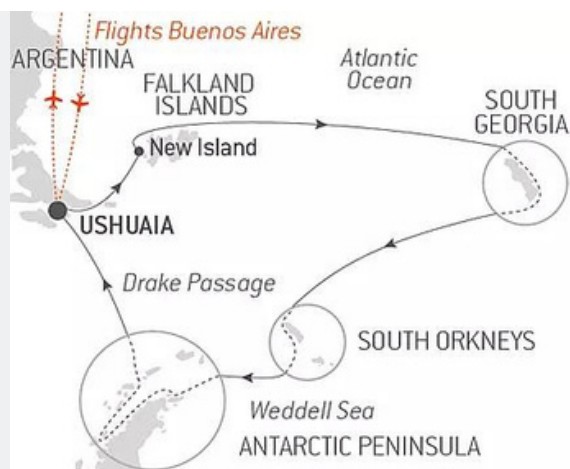


All meals onboard, Captain's welcome cocktails and gala dinner and open bars  
Drinks and selected alcohol.



# THE ANTARCTIC ODYSSEY

18 Days - 17 Nights | Falkland Island - South Georgia - South Orkneys - Antarctica Peninsula



## TENTATIVE ITINERARY

**\*\*Recommend to arrive 1-2 days early to relax and enjoy Buenos Aires city. Add On available please see next page**

- |              |   |                |
|--------------|---|----------------|
| <b>Day 1</b> | <b>BUENOS AIRES</b>   | <b>(D)</b>     |
|              | Welcome to Argentina. Meet and greet at by Ponant Representative and shuttle provided from the airport to your hotel. Upon check in hotel, relax at hotel after long flight. Join other expedition members at dinner  |                |
| <b>Day 2</b> | <b>USHUAIA</b>  | <b>(B/L/D)</b> |
|              | Capital of Argentina's Tierra del Fuego province, Ushuaia is considered the gateway to the White Continent and the South Pole. Nicknamed "El fin del mundo" by the Argentinian people, this city at the end of the world nestles in the shelter of mountains surrounded by fertile plains that the wildlife seem to have chosen as the ultimate sanctuary. With its exceptional site, where the Andes plunge straight into the sea, Ushuaia is one of the most fascinating places on earth, its very name evocative of journeys to the unlikely and the inaccessible... Embarkation from 4.00pm to 5.00pm   |                |
| <b>Day 3</b> | <b>AT SEA</b>   | <b>(B/L/D)</b> |
|              | During your journey at sea, make the most of the many services and activities on board. Treat yourself to a moment of relaxation in the spa or stay in shape in the fitness centre. Depending on the season, let yourself be tempted by the swimming pool or a spot of sunbathing. This journey without a port of call will also be an opportunity to enjoy the conferences or shows proposed on board, depending on the activities offered, or to do some shopping in the boutique or to meet the PONANT photographers in their dedicated space. As for lovers of the open sea, they will be able to visit the ship's upper deck to admire the spectacle of the waves and perhaps be lucky enough to observe marine species. A truly enchanted interlude, combining comfort, rest and entertainment. |                |

## YOUR CRUISE HIGHLIGHT

- The eye and the advice of our photo ambassadors, a privileged opportunity to immortalise your trip with, in the programme: workshops, conferences and personalized advice to improve your photographic skills.
- The most comprehensive of our Antarctic cruises: the Falkland Islands, South Georgia, the South Orkney Islands, before reaching the Holy Grail of all explorers - the shores of the White Continent.
- Outings and shore visits in zodiac inflatables with a team of experienced naturalist guides.
- Enjoy a magical experience as you are introduced to sea kayaking. Lead by experienced, State-Certified kayak guides, you will skim the water's surface amid the ice. For more information about your kayak tour, please go to the section 'PONANT activities' and to book your kayak tour, contact your cruise advisor.
- Lectures and information sessions hosted by our naturalist guides, covering wildlife, history, geopolitics, the great explorers, climate, environmental protection and educational discovery in the respect of environment.
- Hiking opportunity.
- And many more..





## TENTATIVE ITINERARY

### Day 4 **NEW ISLAND & GRAVE COVE** (B/L/D)

This island with its distinctive jagged relief is located on the western edge of the Falkland Islands and is home to a tiny village of two families. Step onto the golden sand of its flower-lined beaches, beside which an old stone house still stands, and you'll feel like you've entered a natural paradise. A narrow pathway weaves around typical Falkland moorlands. Follow it and in under 20 minutes you'll find yourself at the heart of a colony of southern rockhopper penguins, black-browed albatross and imperial shags. It's the perfect opportunity to watch the albatross swoop down from the cliffs and skim the waves that crash against the rocks on the exposed side of the island then, make your way through the turbulent Woolly Gut strait and emerge in the stillness of Grave Cove. Located in the northern edge of the Falkland Islands, this bay owes its name to the vestiges of whalers' graves that overlook the beach. As you step off the boat and onto the white-sand beach, you might find yourself escorted by a few hospitable Commerson's dolphins, elegantly adorned in black and white. A stroll along the grassy dunes will lead you to a vast plain of lush green grass, tended by a few sheep. On the other side of the island you'll find one of the largest gentoo penguin colonies in the area. With some luck, you'll also glimpse a sea lion scouring the waves for his next meal.

### Day 5-6 **AT SEA** (B/L/D)

During your journey at sea, make the most of the many services and activities on board. Treat yourself to a moment of relaxation in the spa or stay in shape in the fitness centre. Depending on the season, let yourself be tempted by the swimming pool or a spot of sunbathing. This journey without a port of call will also be an opportunity to enjoy the conferences or shows proposed on board, depending on the activities offered, or to do some shopping in the boutique or to meet the PONANT photographers in their dedicated space. As for lovers of the open sea, they will be able to visit the ship's upper deck to admire the spectacle of the waves and perhaps be lucky enough to observe marine species. A truly enchanted interlude, combining comfort, rest and entertainment.

### Day 7-9 **SOUTH GEORGIA** (B/L/D)

Aboard your ship, discover South Georgia, a region formed by an underwater mountain chain that extends from the Andes to the Antarctic Peninsula. All the wildlife of the Far South can be found there: king and Gentoo penguins, elephant seals, fur seals... You might get the chance to discover the majestic glaciers of Gold Harbour and the vast plains of Fortuna Bay. If you are fortunate enough to land at Salisbury Plain, you can expect a wonderful spectacle: more than 300,000 king penguins, which you will recognise by the bright orange mark on their head and neck, have taken up residence there.

### Day 10 **AT SEA** (B/L/D)

During your journey at sea, make the most of the many services and activities on board. Treat yourself to a moment of relaxation in the spa or stay in shape in the fitness centre. Depending on the season, let yourself be tempted by the swimming pool or a spot of sunbathing. This journey without a port of call will also be an opportunity to enjoy the conferences or shows proposed on board, depending on the activities offered, or to do some shopping in the boutique or to meet the PONANT photographers in their dedicated space. As for lovers of the open sea, they will be able to visit the ship's upper deck to admire the spectacle of the waves and perhaps be lucky enough to observe marine species. A truly enchanted interlude, combining comfort, rest and entertainment.

### Day 11 **SOUTH ORKNEY ISLANDS** (B/L/D)

More than 85% glaciated, these remote mountainous islands are hidden in the Southern Ocean, some 600 km from the tip of the Antarctic Peninsula. The archipelago is composed of four main islands: Coronation Island, Signy Island, Powell Island and Laurie Island. Discovered in 1821 by seal hunters, they were also explored in 1823 by the British navigator James Weddell, who gave them their current name. Despite the ravages caused by whale and seal hunting, today a sizeable leopard seal population can be found there, along with chinstrap penguins and snow petrels. Laurie Island is home to an old scientific station that is still in operation.

**TENTATIVE ITINERARY**

**Day 12 AT SEA (B/L/D)**

During your journey at sea, make the most of the many services and activities on board. Treat yourself to a moment of relaxation in the spa or stay in shape in the fitness centre. Depending on the season, let yourself be tempted by the swimming pool or a spot of sunbathing. This journey without a port of call will also be an opportunity to enjoy the conferences or shows proposed on board, depending on the activities offered, or to do some shopping in the boutique or to meet the PONANT photographers in their dedicated space. As for lovers of the open sea, they will be able to visit the ship's upper deck to admire the spectacle of the waves and perhaps be lucky enough to observe marine species. A truly enchanted interlude, combining comfort, rest and entertainment.

**Day 13-15 ANTARCTIC PENINSULA (B/L/D)**

Succumb to the magic of a place unlike any other. To this day, the mythical Antarctic Peninsula still holds real fascination and promises its visitors unforgettable moments. Throughout your adventure in this icy realm, you will find yourself in the heart of a spectacular decor in subtle shades of blue and white, surrounded by exceptional wildlife. Penguins, humpback whales, seals and giant petrels are at home here, as are elephant seals, fur seals, Antarctic minke whales, and orcas. Depending on which sites you will be lucky enough to visit, you may get the chance to observe them and share with them the beauty of these extreme parts.

Each day, based on ice conditions, the Captain and the Expedition Leader will suggest zodiac outings or landings to discover the infinite riches of the Antarctic Peninsula. Glaciers, ice floe, tabletop icebergs, mountain peaks that plunge straight into the sea, volcanic beaches, research stations, enchanting bays, and vestiges of the whaling industry: these are the faces of the Antarctic that will likely reveal themselves to you, in a hushed and surreal atmosphere. You will sail in the wake of Jean-Baptiste Charcot, Adrien de Gerlache and Sir Ernest Shackleton, great Antarctic explorers who, from the 19th century, set out to conquer these remote and uninhabited lands.



**Day 16-17 CROSSING THE DRAKE PASSAGE (B/L/D)**

If there is one place, one sea, one waterway dreaded by tourists, researchers and hardened seafarers alike, it is undoubtedly Drake Passage. Situated at the latitude of the infamous Furious Fifties winds, between Cape Horn and the South Shetland Islands, it is the shortest route to connect Antarctica to South America. Seasoned navigators will tell you that you must earn your visit to the White Continent! As the Antarctic convergence zone where cold currents rising up from the South Pole meet warmer equatorial water masses, Drake Passage harbours a very diverse marine fauna. Don't forget to look to the sky to catch a glimpse of elegant albatross and Cape petrels, playfully floating about in the wind around your ship.

**Day 18 USHUAIA (B)**

Capital of Argentina's Tierra del Fuego province, Ushuaia is considered the gateway to the White Continent and the South Pole. Nicknamed "El fin del mundo" by the Argentinian people, this city at the end of the world nestles in the shelter of mountains surrounded by fertile plains that the wildlife seem to have chosen as the ultimate sanctuary. With its exceptional site, where the Andes plunge straight into the sea, Ushuaia is one of the most fascinating places on earth, its very name evocative of journeys to the unlikely and the inaccessible...Disembarkation at 7.00am







# L' Austral

## 6 ELEGANT AND FLEXIBLE SUITES & STATEROOMS

Decorated by French Interior designers, all with sea view

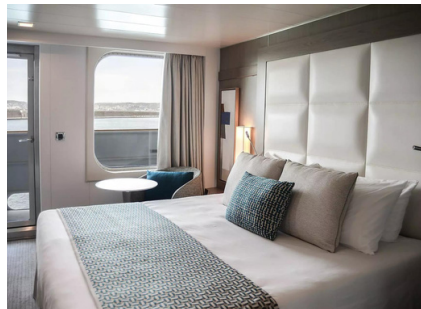


### Superior Stateroom

226 SQFT | MAX 3 GUESTS

Services provided

- Window with no balcony.
- Individually-controlled airconditioning
- Minibar
- Flat screen satellite TV
- Bose™ Bluetooth speaker
- Hermès® bath products
- Dressing table, bath robes, hairdryer
- Direct line telephone
- 110V American (two flat pins) /220V European
- 24hr room service
- Inclusive Internet access Wifi

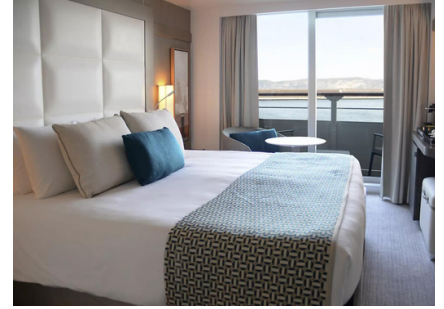


### Deluxe Stateroom

194 SQFT | MAX 2 GUESTS

Services provided

- A private 4 m<sup>2</sup> balcony
- Individually-controlled airconditioning
- Minibar
- Flat screen satellite TV
- Bose™ Bluetooth speaker
- Hermès® bath products
- Dressing table, bath robes, hairdryer
- Direct line telephone
- 110V American (two flat pins) /220V European
- 24hr room service
- Inclusive Internet access Wifi

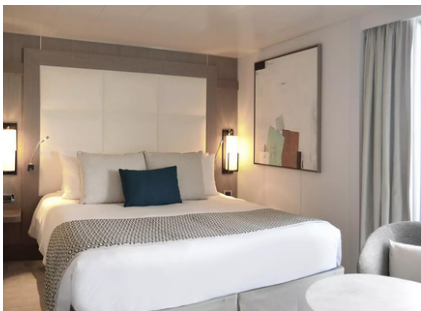


### Prestige Deck 4,5,6

194 SQFT | MAX 2 GUESTS

Services provided

- A private 4 m<sup>2</sup> balcony
- Individually-controlled airconditioning
- Minibar
- Flat screen satellite TV
- Bose™ Bluetooth speaker
- Hermès® bath products
- Dressing table, bath robes, hairdryer
- Direct line telephone
- 110V American (two flat pins) /220V European
- 24hr room service
- Inclusive Internet access Wifi

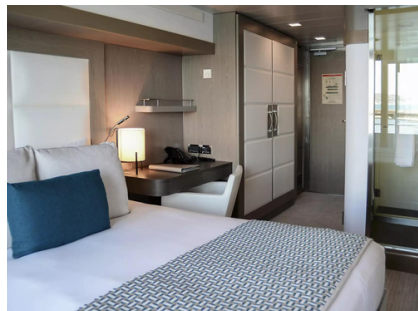


### Deluxe Suite

291 SQFT | MAX 2 GUESTS

Services provided

- A private 5 m<sup>2</sup> balcony
- Individually-controlled airconditioning
- Minibar
- Flat screen satellite TV
- Bose™ Bluetooth speaker
- Hermès® bath products
- Dressing table, bath robes, hairdryer
- Direct line telephone
- 110V American (two flat pins) /220V European
- 24hr room service
- Inclusive Internet access Wifi



### Prestige Deck 5,6 Suite

399 SQFT | MAX 4 GUESTS

Services provided

- A private 8 m<sup>2</sup> balcony
- Individually-controlled airconditioning
- Minibar
- Flat screen satellite TV
- Bose™ Bluetooth speaker
- Hermès® bath products
- Dressing table, bath robes, hairdryer
- Direct line telephone
- 110V American (two flat pins) /220V European
- 24hr room service
- Inclusive Internet access Wifi



### Owner's Suite

399 SQFT | MAX 2 GUESTS

Services provided

- A private 9 m<sup>2</sup> balcony
- Individually-controlled airconditioning
- Minibar
- Flat screen satellite TV
- Bose™ Bluetooth speaker
- Hermès® bath products
- Dressing table, bath robes, hairdryer
- Direct line telephone
- 110V American (two flat pins) /220V European
- 24hr room service
- Inclusive Internet access Wifi