

2023 | WORLD'S ONLY LUXURY ICE BREAKER EXPLORATION VESSEL

 **LE COMMANDANT CHARCOT**

South Polar Region **Beyond Antarctica Circle**



14D/12N
The Emperor
Penguins Of
Weddell Sea
starting from
RM99,170
per person
(approx €20,660 on
Cruise portion)

Ponant Video



Heading beyond Antarctica Circle, into the almost inaccessible Weddell Sea, in search of majestic emperor penguins, amidst immaculate and dreamlike landscapes.



LE COMMANDANT CHARCOT

Beyond Antarctica Circle

HIGHLIGHTS

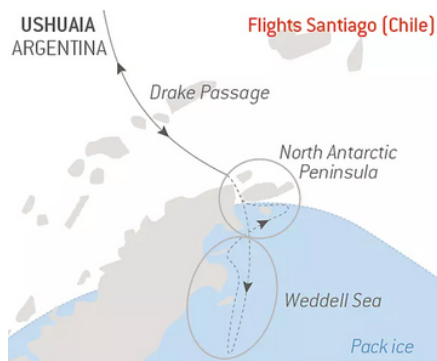
- An all-new exploration into the almost inaccessible Weddell Sea, in search of majestic emperor penguins, amidst immaculate and dreamlike landscapes.
- Outings and shore visits in a zodiac inflatable with a reinforced team of naturalist guides.
- Landscapes: immense glaciers, table top icebergs, immersion in the heart of the ice floes.
- Wildlife: the possibility to observe emperor, Adelie, chinstrap and gentoo penguins; Ross, leopard and crabeater seals; humpback, Minke whales and orcas.
- Many activities: kayaking, hiking or snowshoeing, polar plunge without suit, polar swim with drysuit, participative science.

INCLUDED IN YOUR CRUISE

Return flight Santiago/Punta Arenas and Ushuaia/Santiago selected by PONANT, in economy class. Seats in business class may be available,

14D/12N

The Emperor Penguins Of the Weddell Sea



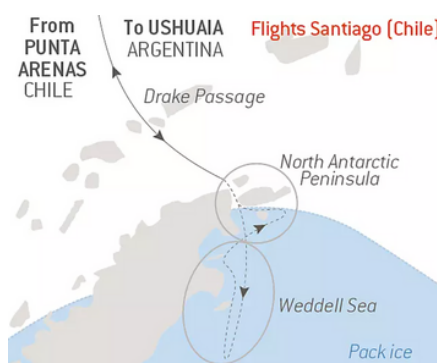
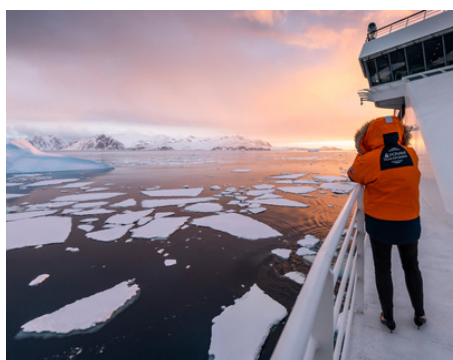
SANTIAGO, CHILE - / USHUAIA, ARGENTINA / SANTIAGO, CHILE

From : 15Nov - 29Nov 2023
Starting From RM 99,170 per person (approx €20,660)



16D/14N

The Emperor Penguins Of the Weddell Sea



SANTIAGO, CHILE - / PUNTA ARENAS, CHILE- USHUAIA, ARGENTINA - SANTIAGO, CHILE

From 01 Nov-17 Nov 2023
Starting From RM 115,180 per person (approx €23,750)





Le Commandant Charcot, the World's Only Luxury Icebreaker that reaches the highest latitudes of the Arctic & beyond the Antarctic circle



Ponant, the only cruise line to sail under French flag, with world's most comprehensive safety standards



Exceptional unique destinations & programs



Inclusive Intra-flight (Chartered flight) from Santiago to Punta Arenas or Ushuaia and return.

EXCEPTIONAL SERVICES



Inspired, refined and varied cuisine, prepared by talented French chefs



All meals onboard, Captain's welcome cocktails and gala dinner and open bars. Drinks & alcohol and selection of fine wines.



FREE 24 hours room service.



Modern & Elegant French-designed interiors & ambiance. Luxury amenities Hermès® or Clarins, Superior comfort & personalised service.



All cabins are suites with private balconies.



Smaller crowd, more privacy with max 246 guests on board



Pamper yourself on board Spa (association with French beauty house SOTHY), Sauna & Snow rooms



FREE POLAR PARKA & rental boots port charges included



THE EMPEROR PENGUINS OF WEDDELL SEA

14 Days 12 Nights [Excluding flying time & Extra Post Night] | Santiago - Ushuaia - Santiago

Option Add on - extra 1 pre & post night in Santiago (recommended)



TENTATIVE ITINERARY

DAY 1 SANTIAGO

Airport pick up transfer to hotel included. Meet and greet by our local representative. Dinner is included (D)

DAY 2 USHUAIA

Embarkation from 4:00 pm to 5:00 pm | Flight 3 hours

USHUAIA - Capital of Argentina's Tierra del Fuego province, Ushuaia is considered the gateway to the White Continent and the South Pole. Nicknamed "El fin del mundo" by the Argentinian people, this city at the end of the world nestles in the shelter of mountains surrounded by fertile plains that the wildlife seem to have chosen as the ultimate sanctuary (B/D)

DAY 3 - 4 CROSSING THE DRAKE PASSAGE

Use your days spent in the Drake Passage to familiarise yourself with your ship and deepen your knowledge of the Antarctic. The Expedition Leader will first present the IAATO rules of conduct that must be observed during landings in the region and will explain everything you need to know about the zodiac outings. Lectures about the history and wildlife of the Antarctic will be an opportunity for you to learn more about this magical region, where every cruise is a unique experience. (B/L/D)

DAY 5 NORTH ANTARCTIC PENINSULA

Throughout your time in the north of the Antarctic Peninsula, you will find yourself in the heart of a spectacular decor in subtle shades of blue and white, surrounded by exceptional wildlife. You will sail through the Antarctic Sound, the gateway to the Weddell Sea, this sound is filled with gigantic tabular icebergs and plates of sea ice drifting northward from the coastal areas of this vast sea. It is home to Adelie penguins and a great many leopard seals. (B/L/D)

DAY 6 - 11 THE WEDDELL SEA EXPLORATION

Impassable, extreme and captivating: this is the best way to describe the Weddell Sea, much of which is covered by a layer of thick, densely packed ice. It is a challenge and a privilege to sail upon this sea. Polar exploration finds its full meaning here. Heading towards the South is a real quest, with the promise of highly-charged encounters with the continent's endemic fauna.

This is the kingdom of the emperor penguin, the largest penguin in the world, renowned for its elegance. Unlike other penguins that live on the rocks, the emperor nests on the ice floe which it needs for its reproductive cycle. It is therefore on the ice floe that you will be able to observe it walking around with its characteristic gait. In this southern sea, where the ice changes and is transformed constantly, there is never any monotony. The new reliefs and new colours ensure never-ending wonderment. You will sail into the heart of the immaculate ice floe, which is dislocated or densely packed, into an alley of icebergs. Among them are immense blocks of ice, tabular icebergs, that drift and illuminate the ocean with their cerulean blue haloes.

Aboard, on shore, on the ice, you will be as close as possible to the colonies of Adelie penguins, Weddell seals, Mink whales, orcas, snow petrels.... With a little luck, you will get a glimpse of a rare Ross seal with its silver pelage or of emperor penguins, waddling along the edge of the ice floe. A sight that is as fascinating as it is emotional. (B/L/D)

DAY 12 - 13 CROSSING THE DRAKE PASSAGE

Meal on board cruise ship

DAY 14 USHUAIA - SANTIAGO

Early morning Disembarkation at 8:00 am | Flight 3 hours

Cruise arrive in Ushuaia. Relax and have a last stroll at Ushuaia, also best known as the "Southern Tip of the world" the before boarding the intra-flight to Santiago enroute to Kuala Lumpur (recommended on late evening flight) or perhaps add an extra night before heading home. (B & Light meal served on plane)

note : 16D/14N program embarkation from Punta Arenas similar program except :

DAY 2 From Santiago to Punta Arenas and embarkation

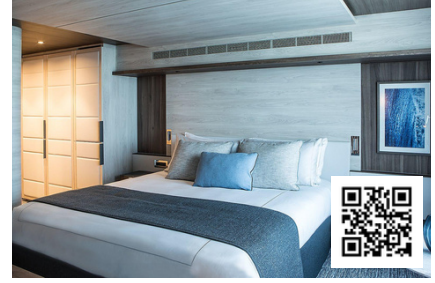
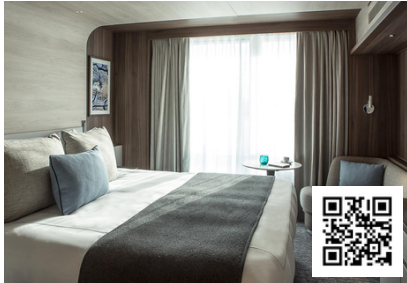
DAY 6 - 13 8 Nights Weddell Sea Exploration



LE COMMANDANT CHARCOT

6 EXCEPTIONALLY ELEGANT SUITES & STATEROOMS

Decorated by French Interior designers, all with sea view



Prestige Stateroom

268 SQFT | MAX 2 GUESTS

- One king-size bed or two single beds
- A bathroom with shower
- Dyptique Paris top-of-the-line bath products
- A private 43 sqft balcony
- Includes Panoramic sliding glazed door
- Inclusive Internet access Wifi
- Individually-controlled air conditioning
- Minibar included
- Nespresso coffee maker and boiler
- 24hr room service
- Flat screen TV, international channels (availability dependent on navigation) and videos on demand

Deluxe Suite

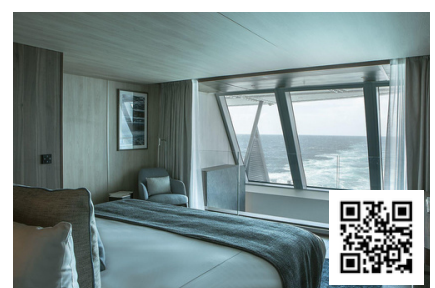
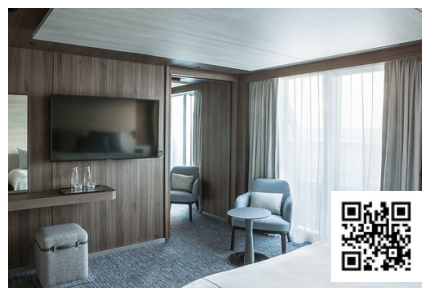
354 SQFT | MAX 2 GUESTS

- A lounge area with chaise longue
- One king-size bed or two single beds
- A bathroom with shower
- Dyptique Paris top-of-the-line bath products
- A private 64.5 sqft balcony
- Includes Panoramic sliding glazed door
- Inclusive Internet access Wifi
- Individually-controlled air conditioning
- Minibar included
- Nespresso coffee maker and boiler
- 24hr room service
- Flat screen TV, international channels (availability dependent on navigation) and videos on demand

Prestige Suite

537 SQFT | MAX 2 GUESTS

- A lounge with sofa & sliding courtesy door
- One king-size bed or two single beds
- Two bathrooms with shower
- Dyptique Paris top-of-the-line bath products
- Two Panoramic sliding glazed door
- A 107 sqft glazed private balcony
- Individually-controlled air-conditioning
- Minibar, Flat screen, Satellite TV
- Nespresso coffee maker and boiler
- Satellite direct line telephone,
- 24hr room service
- Unlimited WIFI Internet access
- Flat screen TV, international channels (availability dependent on navigation) and videos on demand



Grand Prestige Suite

531 SQFT | MAX 2 GUESTS

- Priority boarding
- Champagne and fruit basket upon arrival
- Butler service
- An assortment of sweet or savoury canapés and a basket of fruit every day
- A lounge with chaise longue
- A Samsung tablet connected to Wi-Fi
- A bedroom with king-size bed or two single beds
- A bathroom with shower & balneo bathtub
- A panoramic sliding bay window
- A 54 sqft glazed private balcony
- Individual-controlled air-conditioning
- Minibar,
- Nespresso coffee maker and boiler
- Satellite direct line telephone,
- 24hr room service
- Unlimited WIFI Internet access
- Two pairs of Swarovski CL Companion 10 x 30 binoculars

Privilege Suite

650 SQFT | MAX 4 GUESTS

- Priority boarding
- Champagne and fruit basket upon arrival
- Butler service
- An assortment of sweet or savoury canapés and a basket of fruit every day
- A lounge with chaise longue
- A Samsung tablet connected to Wi-Fi
- A bedroom with king-size bed or two single beds
- A bathroom with shower & balneo bathtub
- A panoramic sliding bay window
- A 134 sqft glazed private balcony
- Individual-controlled air-conditioning
- Minibar,
- Nespresso coffee maker and boiler
- Satellite direct line telephone,
- 24hr room service
- Unlimited WIFI Internet access
- Two pairs of Swarovski CL Companion 10 x 30 binoculars

Duplex Suite

1290 SQFT | MAX 4 GUESTS

- Private return transfer & Priority boarding
- Champagne and fruit basket upon arrival
- Butler service
- An assortment of sweet or savoury canapés and a basket of fruit every day
- A lounge with armchairs, sofa bed, steam fireplace and TV
- Dining room with a 6-seater table
- A minibar with RIEDEL crystal glasses
- A Samsung tablet connected to Wi-Fi
- A bedroom with king-size bed or two single beds
- A bathroom with shower & balneo bathtub
- Five panoramic windows and a glazed panoramic door
- A private 279 sqft terrace: outdoor lounge with sofa and armchairs, jacuzzi
- Two pairs of Swarovski CL Companion 10 x 30 binoculars



LE COMMANDANT CHARCOT

BEYOND EXPLORATION



LE COMMANDANT CHARCOT is the first deep polar expedition cruise ship to be equipped with a hybrid liquefied natural gas (currently the cleanest energy available) propulsion and a bank of high capacity batteries



In the Arctic or in the Antarctic, embark on a polar odyssey that is as adventurous as it is environmentally-friendly

- The 1st hybrid-electric polar exploration ship
- 2 restaurants: iconic Signature dishes of Alain Ducasse, a bistro-style menu and finger food
- A 430 sq.m. wellness area: massages, hair salon, sauna, gym with a dedicated coach, Detox bar
- Spaces never seen before in the PONANT fleet: the Blue Lagoon, an outdoor lagoon heated

to 27°C-37°C using energy recovery, a heated indoor swimming pool, a Snow Room, a fun snow bath, a Cigar Lounge, an uninterrupted outdoor walking bridge

- Unique and included activities: snowshoeing, dog sledding, ice fishing, kayaking, swimming in polar water in a dry suit, citizen science...
- Concierge service



IN DETAIL

Length: 150 m • Width: 28 m • Draft: 10 m • Average cruising speed: 15 knots • Number of staterooms and suites: 123 • Crew members: 215 • Installed electrical power: 42 MW • Year of delivery: 2021